



A message to
reach, diagnose & control
of infectious disease

Microcare
Laboratory

information broucher by

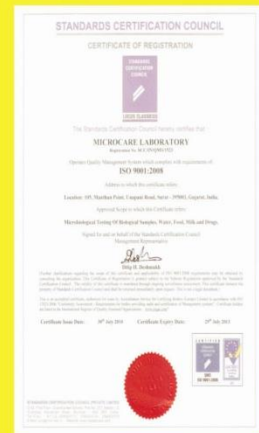


NABL CERTIFIED MICROBIOLOGY LABORATORY

Contact: 105, Manthan point, unapani road,
lal darwaja, surat-3
0261-2450049 / 6952555

LABORATORY ACCREDITATION & PROFILE

Microcare Laboratory Is Established In 2004 In The Centre Of The Surat, Gujarat. India. In The Field of Microbiology Testing's, Microcare laboratory, all the time will work towards a common goal of total customer satisfaction by providing Microbiological testing services with quality, safety, reliability and courtesy. Microcare laboratory, all the time will work towards a common goal of total customer satisfaction by providing Microbiological testing services with quality, safety, reliability and courtesy.



LABORATORY ACCREDITATION

N A B L Certified [1st NABL Certified Microbiology laboratory in south Gujarat , Gujarat.]
AN ISO 9001 : 2008 Certified
I R L [INTERMEDIATE REFERENCE LABORATORY] ACCREDITATION under Implementation



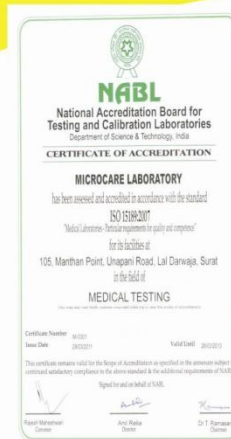
LABORATORY ATTACHMENT

LIFE TIME MEMBERSHIP OF INDIAN ASSOCIATION OF MEDICAL MICROBIOLOGIST.
LIFE TIME MEMBERSHIP OF HOSPITAL INFECTION SOC. OF INDIA.
STOP TB PARTNER – WHO



SCIENTIFIC RESEARCH

We are doing collaborative research work with various reputed universities, institutions and colleges.
Biological Activity of Newly Synthesized Drugs. [Anti bacterial, Anti fungal, Anti mycobacterial]
Clinical and Industrial research



TRAINING & DISSERTATION PROGRAMMES

Training: Programme & Dissertation programme for B.sc., M.sc students.
Medical Microbiology, Hospital Acquired Infection, Industrial Microbiology, Food Microbiology, Water Microbiology& other....

CONSULTANCY SERVICES

Setting up Microbiology laboratory,
NABL Certification, ISO certification

**GENERAL GUIDELINE FOR SELECTION, COLLECTION, STORAGE
AND TRANSPORT OF MICROBIOLOGICAL SAMPLE**

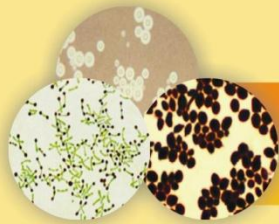
RESULTS ARE AS GOOD AS SPECIMENS”

SPECIMEN	CONTAINER / TRANSPORT MEDIUM	TRANSPORTATION TO LABORATORY	STORAGE
ABSCESS			
[lesion, wound, ulcer, superficial]	Sterile, screw cap container / aerobic swab Amie's transport medium	as soon as possible	2- 4 °C
BODY FLUIDS			
[Amniotic, abdominal ascitic, bile, Cerebrospinal fluid, joint, pericardial, pleural]	Sterile, screw cap container or tube	as soon as possible	2- 4 °C, Except CSF,CSF at RT
EAR			
[Ear swab, pus]	Sterile, screw cap container or tube or swab Amie's transport medium	as soon as possible	2- 4 °C,
EYE			
[Conjunctiva / Corneal scrapings]	Sterile, screw cap container or tube or swab Amie's transport medium	as soon as possible	2- 4 °C,
GI TRACT			
[Gastric aspirates, rectal swab, stool]	Sterile, screw cap container or tube	as soon as possible	2- 4 °C,
GENITAL TRACT			
Female [Cyst, cervix, endometrium, urethra, vaginal]	Aerobic transport swab with Amie's medium or sterile, screw cap tube or container or Anaerobic transporter	as soon as possible	2- 4 °C,
Male Prostate	swab with Amie's medium or sterile, screw cap tube or container	as soon as possible	2- 4 °C,
HAIR, NEIL OR SKIN			
Scraping from Hair, Nail or Skin]	sterile, screw cap tube or container	Within 24 Hrs.	RT
RESPIRATORY TRACT			
Lower [Sputum, tracheal]	sterile, screw cap tube or container	as soon as possible	2- 4 °C,
Upper [Nasopharynx, pharynx[throat]]	swab with Amie's medium or sterile, screw cap tube or container	as soon as possible	2- 4 °C,
URINE			
[Clean voided midstream, straight catheter, indwelling catheter]	sterile, screw cap tube or container	as soon as possible	2- 4 °C,



AEROBIC CULTURE & SENSITIVITY

Test	TURNAROUND TIME
Abscess Culture & Sensitivity	48 Hours
Blood Culture & Sensitivity By BACT Alert	Final 5 Days, Interim 24 / 48 Hours.
Blood Culture & Sensitivity [Conventional]	Final 5 Days, Interim 24 / 48 Hours.
Catheter Tips/Other Tips Culture & Sensitivity	48 Hours
CSF & Other Body Fluids Culture & Sensitivity	48 Hours
E.T Secretion Culture & Sensitivity	48 Hours
Pus Culture & Sensitivity	48 Hours
Semen Culture & Sensitivity	48 Hours
Sputum Culture & Sensitivity	48 Hours
Stool Culture & Sensitivity	48 Hours
Throat Swab & Other Swab Culture & Sensitivity	48 Hours
Tracheal Secretion Culture & Sensitivity	48 Hours
Urine Culture & Sensitivity	48 Hours
Tb Ig G / Tb Ig M / Tb Ig A	Same Day



STAINING PREPARATION

Test	Specimen	Storage
Albert's staining	Any	RT
Gram's staining	Any	RT
India Ink Preparation	CSF	RT
KOH Preparation	Any	RT
ZN staining	Any	RT
Other special staining	Any	RT



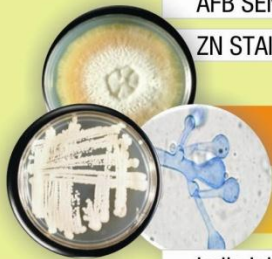
ANAEROBIC CULTURE & SENSITIVITY

Test	TURNAROUND TIME
Abscess Culture & Sensitivity	Final 7 Days, Interim 24 / 48 Hours.
Blood Culture & Sensitivity By Bact Alert	Final 7 Days, Interim 24 / 48 Hours.
Blood Culture & Sensitivity [Conventional]	Final 7 Days, Interim 24 / 48 Hours.
Body Fluids Culture & Sensitivity	Final 7 Days, Interim 24 / 48 Hours.
Pus Culture & Sensitivity	Final 7 Days, Interim 24 / 48 Hours.



MYCOBACTERIOLOGY

Test	TURNAROUND TIME
AFB CULTURE ON L.J.MEDIUM	8 TH week
AFB CULTURE BY BACTEC MGIT	6 DAYS -42 DAYS
AFB SENSITIVITY PRIMARY DRUGS [4 DRUG]	28-42 DAYS
AFB SENSITIVITY SECONDARY DRUGS [6 DRUGS]	28-42 DAYS
ZN STAIN [Direct or Concentration]	Same Day



MYCOLOGY

Test	TURNAROUND TIME
India Ink Preparation	Same Day
KoH Examination	Same Day
CULTURE FOR CRYPTOCOCCUS	7 Days
BLOOD & BODY FLUID BY BAC ALERT CULTURE	7 Days
DERMATOPHYTES CULTURE	7 Days
SPUTUM FOR YEAST OR MOULD	7 Days
HAIR,NAIL AND SKIN SCRAPPINGS	7 Days
SENSITIVITY	48 Hours



FOOD, WATER & DRUG TESTING

Test

Food analysis for pathogen detection

Water analysis for pathogen detection

Drug assay for Antibacterial, Anti fungal, Anti TB, Anti Malarial etc...



OTHERS

Test	TURNAROUND TIME
Swab from different sites from ICU,OT, Wards etc...	48 Hours
AIR Sample from ICU,OT, Wards etc...	48 Hours, 7 Days
ESBL Detection, MRSA Detection, VRE Detection	72 Hours
Water Sample	72 Hours

Training Programme for Hand hygiene, Microbiological sample collection,
Transportation and Preservation